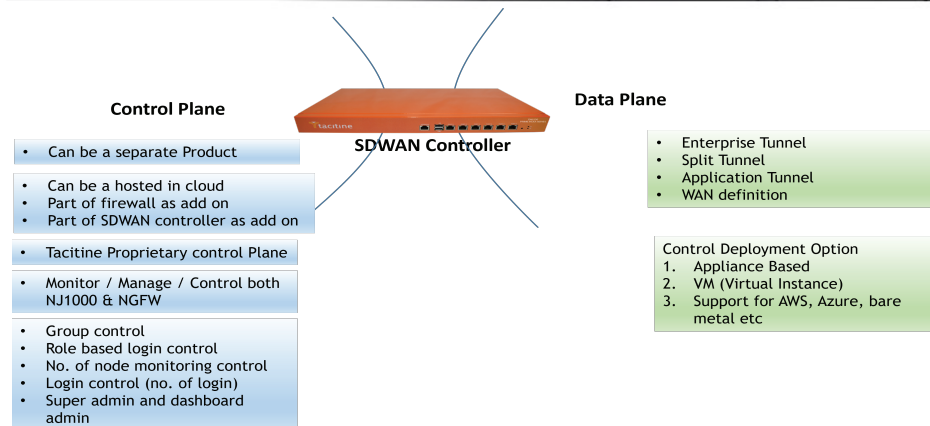


## SDWAN Controller+ Central Console(CC7100)



High performance SD WAN + Central Console using any ISP Connection!!!

Tacitine VN3100 SD WAN Solutions are cost effective way of securing and inter connecting Head Quarters / DC with branches office's with 100% uptime. It enables seamless and secure remote access to CRM, ERP, SAP, Tally, Busy Marg, APX and intranet applicaiton servers.

Tacitine VN3100 Series coupled with CC7100 are deployed across Banks, Financial Institutions, Corporates, Logistics, Healthcare, Food & Beverages and Retail showrooms across the Globe.

Work with all ISP

Multiple ISP auto load balance & failover

Multiple virtual sucure tunnel server

IDS/IPS | GeoIP Filter | PFS

Encryption : 3DES-192, AES -128-CBC , AES-256-CBC, AES-128-GCM, AES-256-GCM

CAMELLIA-128-CBC,CAMELLIA-256-CBC, CHACHAPOLY1035

Message integrity: SHA1, SHA256, SHA384, SHA512

DH Group : DH1, DH2, DH5, DH14-DH21, DH26-DH32

Two Factor Authentication, MAC binding, SMS OTP, Google QR

Cylock 2FA & QNU Labs PRNG Integration\* (optional)

2x scalable appliance

High Availability

Central monitoring & management of branch / outlet locations

Alerts on branch / outlet internet failure

Daily Digest reports

- \*Affordable
- \*Simple to use
- \*Analyzer
- \*100% uptime
- \*No static IP
- \*Dashbord
- \*Scalable
- \*Central Console
- \*ZTP
- \*Controller based
- \*Control Plane
- \*Data Plane
- \* Management Plane
- \*Appliance based
- \*VM based

### SD WAN Solutions

Tacitine VN3100 Series is available in various models starting from 50 secure tunnel to 10000 secure tunnels both in appliance model and Virtual Machine model.

# Specifications

The VN3100 PRIME OCTA 2000 Series is specifically designed for the corporate segment, incorporating a flexible "pay-as-you-grow" model to meet the evolving demands of the market. Built with option to have all three licenses (Control Plane, Data Plane & Management plane) in single appliance or Control & Data plane in one appliance and Management plane in a different appliance or VM or cloud protection and intrusion-free networking with on box reporting.

## Basic Features

### Networking

- Multiple ISP link support
- 4G / 5G LTE Dongle support
- Captive support for MPLS/RF LAN / DMZ / VPN Zone
- Quality based link failover
- Spillover bandwidth support
- Priority based load balancing
- DNS, DHCP & DHCP Relay
- Ethernet LAG | Proxy ARP
- MAC Clone and VLAN tag on WAN
- Alternate DNS Server
- Internal DNS Domain
- Transparent, Route and Bridge mode

### Routing

- Static Routing
- Gateway & Interface Route
- Multicast Routing
- IP Passthrough
- ILLB
- RIP V1 / V2
- OSPF
- BGP
- PIMv2

### Firewall / NAT

- SPI and DPI Firewall
- Application Visibility & Control
- Geo-Fencing
- Filter Rules (Accept | Reject | Drop | Rapid Accept)
- DNS Security
- MAC-IP Interface binding
- Port Forward (SNAT & DNAT)
- One to One NAT
- NetMap NAT
- Global IP Blacklist
- NAT Helpers | IP, MAC, Domain List
- System Security | Show Config

### Authentication

- On box with password policy
- Radius & LDAP / AD
- TACACS / TACACS+

### Regulatory Compliance

- MTCTE (ER)
- UL, RoHS, CE, FCC

## Data Plane Features

### SSL VPN

- 5 Virtual VPN Servers
- 3 different modes
- Data path optimizer
- Enterprise tunnel with PBR
- Cipher :
- AES-128 & AES-256 GCM
- AES-128 & AES-256 CBC
- Chacha20-Poly1305
- Camellia-128 & 256 CBC
- Auth Algorithm :
- SHA256, SHA384, SHA512, MD5

### IPSec VPN

- Both Interface & Tunnel type
- GRE over IPSec | IKE1 & IKE2
- SDWAN Scheme support
- Encryption:
- AES 128, 196 256-CBC
- AES 128 GCM with 64,96,128
- AES 256 GCM with 64,96,128
- AES 128 & 256 -CTR
- Chacha20-Poly1305
- AES-128-CCM with 64, 128
- AES-256-CCM with 64, 128
- Camellia 128 & 256-CBC
- 3DES-EDE-CBC
- DH Group: DH1-DH32

### Wireguard VPN

- 5 Virtual VPN Servers
- Public key | Pre Shared key
- Firewall Zone support
- SDWAN Zone Support
- Chacha20-Poly1305
- Curve25519
- BLAKE2s
- Noise Protocol for handshake

## Control Plane Features

- Control & Data Plane management
- Zero Touch Provisioning
- Enterprise and Split tunnel
- Edge device with NGFW support
- Jitter, Packet loss & RTA
- Subnet Load balancer
- Link Management
- ILLB & WLLB
- Routing & Balancing Policy
- Application based, ISP based
- Preferred Interface & Firewall address support

## Management Plane Features

### Management

- Add on Separate product
- Zero Touch Provisioning (ZTP)
- Role based login / control
- Group Management
- Super admin / Dashboard admin
- Node control
- Configuration Management
- Auto backup on daily / weekly / monthly
- Backup via FTP / email
- Daily Digest Report over email
- Ethernet Port Management
- Password Policy | NTP Setting
- EDL Support | SOAR Support

### Alerts

- ISP link down alert
- HA failover alert
- Real Time alerts on data usage
- Alert on Firewall login
- Alert on Watchdog on process failure
- Alert on FTP log export
- Alert on Configuration Changes
- Rest API | SNMP V2/V3, Remote Syslog

### Log/Report

- 50+ Logs and 18 Report
- Compliance Logs
- Audit Logs
- Digest Reports
- Live Network Sniffer
- Real time netflow (IP & Port)
- Connection Tracking Log
- Config Change log
- Firewall login digest report
- 180 days log archive
- 30+ debugging commands
- Built in logs and reports

## Implementation Methods

- Appliance based
- Choice of appliance is based on enterprise cloud load
- VM support (Hyber V, AVX, VMWare)
- Cloud support (AWS, Azure, Oracle, GCP, Digital Ocean etc)

## VN3100-2000 Appliance Specs

- 6- 2.5GE Ports & 2x1G SFP (Fixed ports)
- DDR4 - 16GB (scalable upto 128GB)
- SSD - 500GB (scalable upto 1TB)
- 2 USB | 1VGA | 1 Console
- Dim-mm (HxWxL) : 44x435x450
- Color : Black | Weight : 11Kg
- Input : Dual Input : 90~264V@47~63Hz
- Oper Temp : 0-45 °C
- Storage Temp : 2-70 °C
- Relative Humidity (NC) - 10-90%

## Specifications

Performance Parameters	VN3100-PRIME OCTA SDWAN-CC7100-2X
Support VPN Types	IPSec, SSL, Crypto, PPTP, Cisco VPN & Anyconnect
Access Types	Resource based & Host Based
Supported ISP	ILL, MPLS, RF, VSAT, ADSL, 4G, Wi-Fi Hotspot
VPN Throughput (Gbps)	15
Firewall Throughput (Gbps)	20
Site to Site SSL VPN (max)	5000
Supported OS (Client - Site)	Windows, Linux, Andriod, IOS
IPV6 Ready	Yes
Firewall Policies	Unlimited
Inbound NAT connection	Unlimited
TFA Integration	SMS OTP / Google Authenticator / AD/LDAP
Data Channel Tunnel Type	Full data channel & Split data channel
Authentication Methods	MAC Binding, SMS OTP, Standard Method

## Hardware Specification

Gigabit Ethernet Ports	6x2.5GE, 2x1G SFP
RAM DDR4	16GB (scalable upto 128 GB)
Storage - SSD	240 GB (Scalable upto 1TB)
USB / VGA Port	2/1
Form Factor   Expansion Slot	1U Rackmount   2
Dimensions (mm) - (HxWxD)	88x440x350
Weight (Kg)	11
Color	Black
Power Supply	230V AC 3 Pin (Dual hot swappable redundant PSU)
Input Voltage	100-240V/50-60Hz
Consumption	550W
Total Heat Dissipation (BTU)	160
Operating Temperature	5-45 ° C
Storage Temperature	10-70° C
Relative Humidity (NC)	5 to 95%
Regulatory Compliance	MTCTE, FCC Part 15, Class B, CE, RoHS

# All specification and photos are subject to change without prior notice.

\* Model support a scalability upto 500 VPN tunnels. Based on the CPU load and throughput max VPN supported is 1000 with this appliance.

## Ordering Information

VN3100-PRIME OCTA SDWAN-CC7100-2X-2000-Y	6x2.5GE, 2x1G SFP + Optiona SFP Module supporting 2000+ locations
--	---

## Add on cards to order

T = No. of Tunnel Licenses required to interconnect the branch locations for dataplane and control plane

VN3100-PDC612-10GSF4	4x10G SFP+ Card for PRIME OCTA Model
VN3100-PDC612-10GSF2	2x10G SFP+ Card for PRIME OCTA Model
VN3100-PDC612-1GSF4	4x1G SFP Card for PRIME OCTA Model
VN3100-PDC612-1GE4	4x1G Copper Card for PRIME OCTA Model

Upto 500 tunnels per virtual server and max 10 Virtual server in single appliance | Y = Subscription years options : 1 Year or 3 Years or 5 Years

## Tacitine Assured Support

Tacitine products come with direct OEM 24/7 support by trained Professionals for product configuration and support. TAS helps customer on security best practices to make the network hacker free and more reliable.

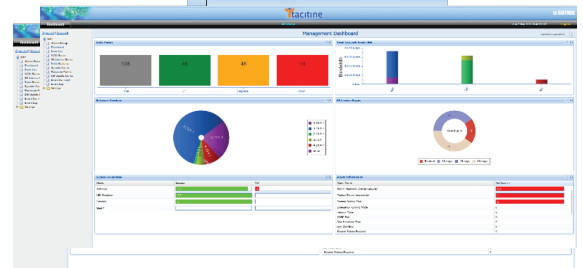


www.tacitine.com  
As ISO 9001 & 27001 Company

Tacitine Consulting Pvt Ltd,  
6/1, 1st Main,  
Behind Kodava Samaj, Vasanth Nagar,  
Bangalore – 560 052.  
India | USA | Middle East | APAC

## CC7100 Features

### NMS Dashboard



### Event Log

Time	Event	Severity	Source	Message
2023-10-27 10:15:00	System Start	Info	System	System started successfully.
2023-10-27 10:15:05	Configuration Load	Info	Config	Configuration files loaded.
2023-10-27 10:15:10	VPN Tunnel Established	Info	VPN	VPN Tunnel established for client 192.168.1.100.
2023-10-27 10:15:15	Interface Up	Info	Net	Interface eth0 is up.
2023-10-27 10:15:20	VPN Tunnel Terminated	Info	VPN	VPN Tunnel terminated for client 192.168.1.100.
2023-10-27 10:15:25	System Health Check	Info	System	System health check passed.
2023-10-27 10:15:30	Configuration Save	Info	Config	Configuration files saved.
2023-10-27 10:15:35	VPN Tunnel Established	Info	VPN	VPN Tunnel established for client 192.168.1.101.
2023-10-27 10:15:40	Interface Up	Info	Net	Interface eth1 is up.
2023-10-27 10:15:45	VPN Tunnel Terminated	Info	VPN	VPN Tunnel terminated for client 192.168.1.101.
2023-10-27 10:15:50	System Health Check	Info	System	System health check passed.
2023-10-27 10:15:55	Configuration Save	Info	Config	Configuration files saved.
2023-10-27 10:16:00	VPN Tunnel Established	Info	VPN	VPN Tunnel established for client 192.168.1.102.
2023-10-27 10:16:05	Interface Up	Info	Net	Interface eth2 is up.
2023-10-27 10:16:10	VPN Tunnel Terminated	Info	VPN	VPN Tunnel terminated for client 192.168.1.102.
2023-10-27 10:16:15	System Health Check	Info	System	System health check passed.
2023-10-27 10:16:20	Configuration Save	Info	Config	Configuration files saved.
2023-10-27 10:16:25	VPN Tunnel Established	Info	VPN	VPN Tunnel established for client 192.168.1.103.
2023-10-27 10:16:30	Interface Up	Info	Net	Interface eth3 is up.
2023-10-27 10:16:35	VPN Tunnel Terminated	Info	VPN	VPN Tunnel terminated for client 192.168.1.103.
2023-10-27 10:16:40	System Health Check	Info	System	System health check passed.
2023-10-27 10:16:45	Configuration Save	Info	Config	Configuration files saved.
2023-10-27 10:16:50	VPN Tunnel Established	Info	VPN	VPN Tunnel established for client 192.168.1.104.
2023-10-27 10:16:55	Interface Up	Info	Net	Interface eth4 is up.
2023-10-27 10:17:00	VPN Tunnel Terminated	Info	VPN	VPN Tunnel terminated for client 192.168.1.104.
2023-10-27 10:17:05	System Health Check	Info	System	System health check passed.
2023-10-27 10:17:10	Configuration Save	Info	Config	Configuration files saved.
2023-10-27 10:17:15	VPN Tunnel Established	Info	VPN	VPN Tunnel established for client 192.168.1.105.
2023-10-27 10:17:20	Interface Up	Info	Net	Interface eth5 is up.
2023-10-27 10:17:25	VPN Tunnel Terminated	Info	VPN	VPN Tunnel terminated for client 192.168.1.105.
2023-10-27 10:17:30	System Health Check	Info	System	System health check passed.
2023-10-27 10:17:35	Configuration Save	Info	Config	Configuration files saved.
2023-10-27 10:17:40	VPN Tunnel Established	Info	VPN	VPN Tunnel established for client 192.168.1.106.
2023-10-27 10:17:45	Interface Up	Info	Net	Interface eth6 is up.
2023-10-27 10:17:50	VPN Tunnel Terminated	Info	VPN	VPN Tunnel terminated for client 192.168.1.106.
2023-10-27 10:17:55	System Health Check	Info	System	System health check passed.
2023-10-27 10:18:00	Configuration Save	Info	Config	Configuration files saved.

### Node Status

Node ID	Node Name	IP Address	Status	VPN Tunnels	Uptime
1	Node-01	192.168.1.1	Up	10	10:15:00
2	Node-02	192.168.1.2	Up	10	10:15:00
3	Node-03	192.168.1.3	Up	10	10:15:00
4	Node-04	192.168.1.4	Up	10	10:15:00
5	Node-05	192.168.1.5	Up	10	10:15:00
6	Node-06	192.168.1.6	Up	10	10:15:00
7	Node-07	192.168.1.7	Up	10	10:15:00
8	Node-08	192.168.1.8	Up	10	10:15:00
9	Node-09	192.168.1.9	Up	10	10:15:00
10	Node-10	192.168.1.10	Up	10	10:15:00
11	Node-11	192.168.1.11	Up	10	10:15:00
12	Node-12	192.168.1.12	Up	10	10:15:00
13	Node-13	192.168.1.13	Up	10	10:15:00
14	Node-14	192.168.1.14	Up	10	10:15:00
15	Node-15	192.168.1.15	Up	10	10:15:00
16	Node-16	192.168.1.16	Up	10	10:15:00
17	Node-17	192.168.1.17	Up	10	10:15:00
18	Node-18	192.168.1.18	Up	10	10:15:00
19	Node-19	192.168.1.19	Up	10	10:15:00
20	Node-20	192.168.1.20	Up	10	10:15:00
21	Node-21	192.168.1.21	Up	10	10:15:00
22	Node-22	192.168.1.22	Up	10	10:15:00
23	Node-23	192.168.1.23	Up	10	10:15:00
24	Node-24	192.168.1.24	Up	10	10:15:00
25	Node-25	192.168.1.25	Up	10	10:15:00
26	Node-26	192.168.1.26	Up	10	10:15:00
27	Node-27	192.168.1.27	Up	10	10:15:00
28	Node-28	192.168.1.28	Up	10	10:15:00
29	Node-29	192.168.1.29	Up	10	10:15:00
30	Node-30	192.168.1.30	Up	10	10:15:00
31	Node-31	192.168.1.31	Up	10	10:15:00
32	Node-32	192.168.1.32	Up	10	10:15:00
33	Node-33	192.168.1.33	Up	10	10:15:00
34	Node-34	192.168.1.34	Up	10	10:15:00
35	Node-35	192.168.1.35	Up	10	10:15:00
36	Node-36	192.168.1.36	Up	10	10:15:00
37	Node-37	192.168.1.37	Up	10	10:15:00
38	Node-38	192.168.1.38	Up	10	10:15:00
39	Node-39	192.168.1.39	Up	10	10:15:00
40	Node-40	192.168.1.40	Up	10	10:15:00
41	Node-41	192.168.1.41	Up	10	10:15:00
42	Node-42	192.168.1.42	Up	10	10:15:00
43	Node-43	192.168.1.43	Up	10	10:15:00
44	Node-44	192.168.1.44	Up	10	10:15:00
45	Node-45	192.168.1.45	Up	10	10:15:00
46	Node-46	192.168.1.46	Up	10	10:15:00
47	Node-47	192.168.1.47	Up	10	10:15:00
48	Node-48	192.168.1.48	Up	10	10:15:00
49	Node-49	192.168.1.49	Up	10	10:15:00
50	Node-50	192.168.1.50	Up	10	10:15:00

### WAN (ISP) Status

ISP	IP Address	Status	VPN Tunnels	Uptime
ISP-01	192.168.1.1	Up	10	10:15:00
ISP-02	192.168.1.2	Up	10	10:15:00
ISP-03	192.168.1.3	Up	10	10:15:00
ISP-04	192.168.1.4	Up	10	10:15:00
ISP-05	192.168.1.5	Up	10	10:15:00
ISP-06	192.168.1.6	Up	10	10:15:00
ISP-07	192.168.1.7	Up	10	10:15:00
ISP-08	192.168.1.8	Up	10	10:15:00
ISP-09	192.168.1.9	Up	10	10:15:00
ISP-10	192.168.1.10	Up	10	10:15:00
ISP-11	192.168.1.11	Up	10	10:15:00
ISP-12	192.168.1.12	Up	10	10:15:00
ISP-13	192.168.1.13	Up	10	10:15:00
ISP-14	192.168.1.14	Up	10	10:15:00
ISP-15	192.168.1.15	Up	10	10:15:00
ISP-16	192.168.1.16	Up	10	10:15:00
ISP-17	192.168.1.17	Up	10	10:15:00
ISP-18	192.168.1.18	Up	10	10:15:00
ISP-19	192.168.1.19	Up	10	10:15:00
ISP-20	192.168.1.20	Up	10	10:15:00
ISP-21	192.168.1.21	Up	10	10:15:00
ISP-22	192.168.1.22	Up	10	10:15:00
ISP-23	192.168.1.23	Up	10	10:15:00
ISP-24	192.168.1.24	Up	10	10:15:00
ISP-25	192.168.1.25	Up	10	10:15:00
ISP-26	192.168.1.26	Up	10	10:15:00
ISP-27	192.168.1.27	Up	10	10:15:00
ISP-28	192.168.1.28	Up	10	10:15:00
ISP-29	192.168.1.29	Up	10	10:15:00
ISP-30	192.168.1.30	Up	10	10:15:00
ISP-31	192.168.1.31	Up	10	10:15:00
ISP-32	192.168.1.32	Up	10	10:15:00
ISP-33	192.168.1.33	Up	10	10:15:00
ISP-34	192.168.1.34	Up	10	10:15:00
ISP-35	192.168.1.35	Up	10	10:15:00
ISP-36	192.168.1.36	Up	10	10:15:00
ISP-37	192.168.1.37	Up	10	10:15:00
ISP-38	192.168.1.38	Up	10	10:15:00
ISP-39	192.168.1.39	Up	10	10:15:00
ISP-40	192.168.1.40	Up	10	10:15:00
ISP-41	192.168.1.41	Up	10	10:15:00
ISP-42	192.168.1.42	Up	10	10:15:00
ISP-43	192.168.1.43	Up	10	10:15:00
ISP-44	192.168.1.44	Up	10	10:15:00
ISP-45	192.168.1.45	Up	10	10:15:00
ISP-46	192.168.1.46	Up	10	10:15:00
ISP-47	192.168.1.47	Up	10	10:15:00
ISP-48	192.168.1.48	Up	10	10:15:00
ISP-49	192.168.1.49	Up	10	10:15:00
ISP-50	192.168.1.50	Up	10	10:15:00